



S MIX

Version 0.1 Beta

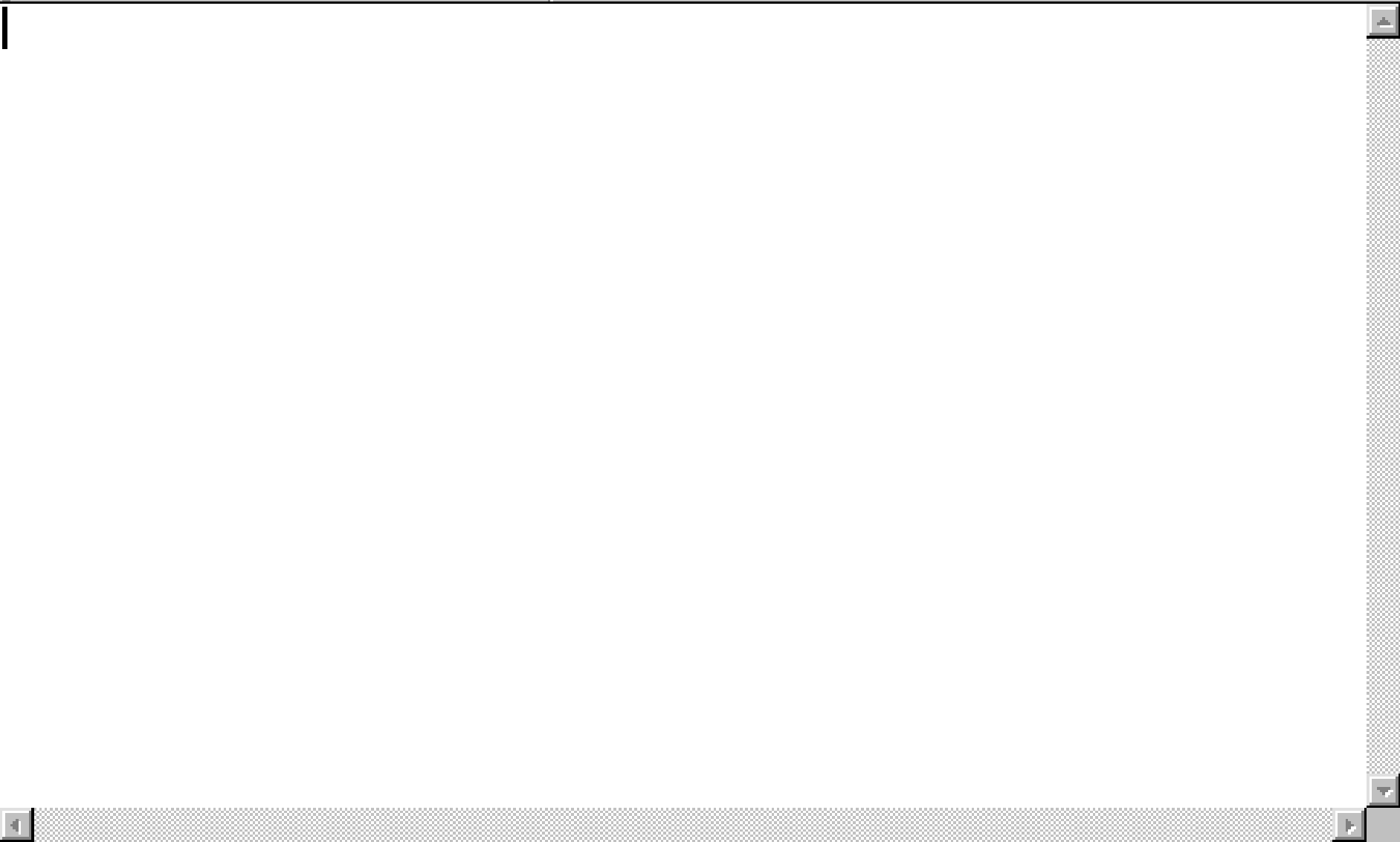


©2000

SMX - [Project1.smx]

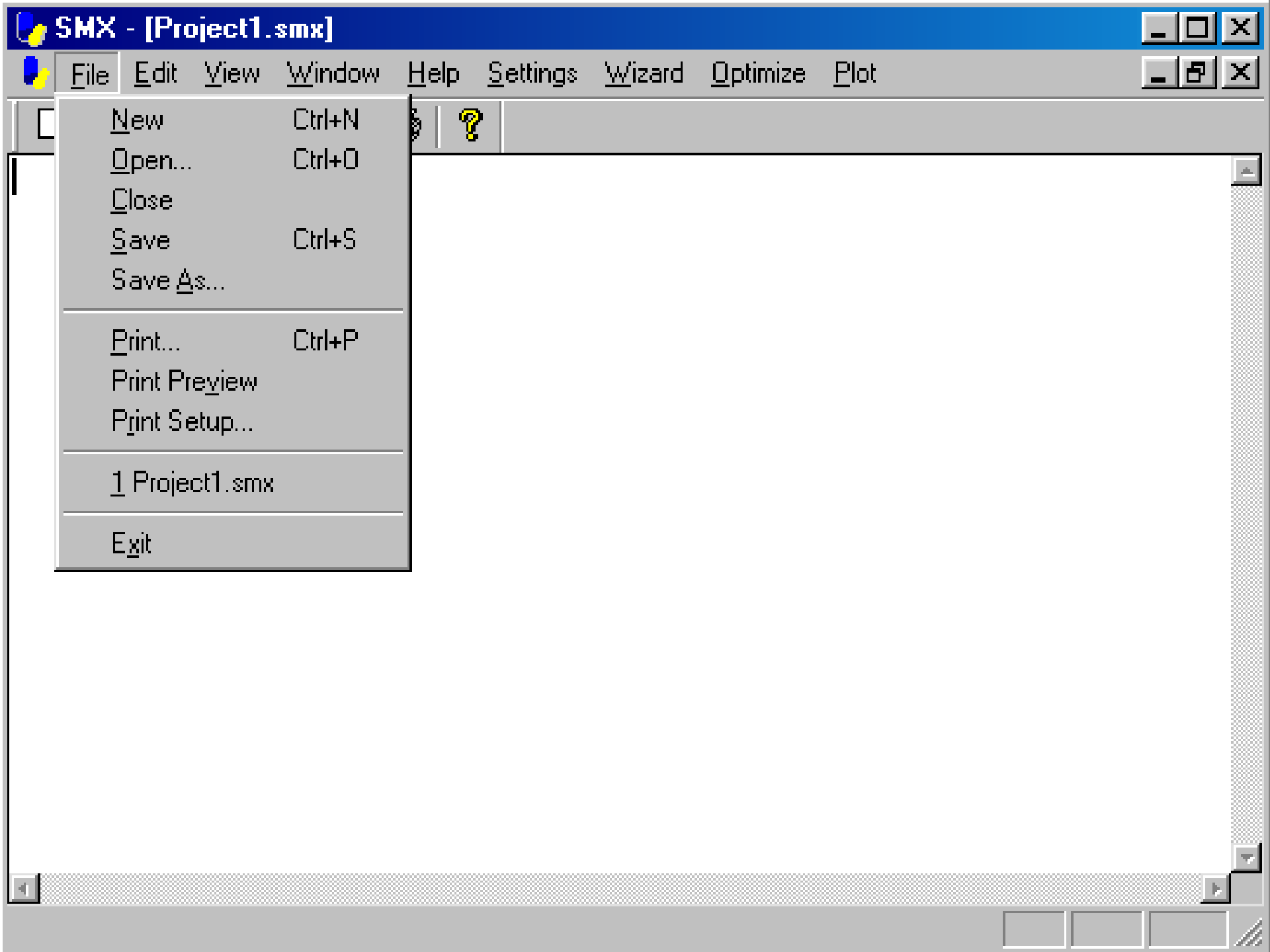


File Edit View Window Help Settings Wizard Optimize Plot



Ready



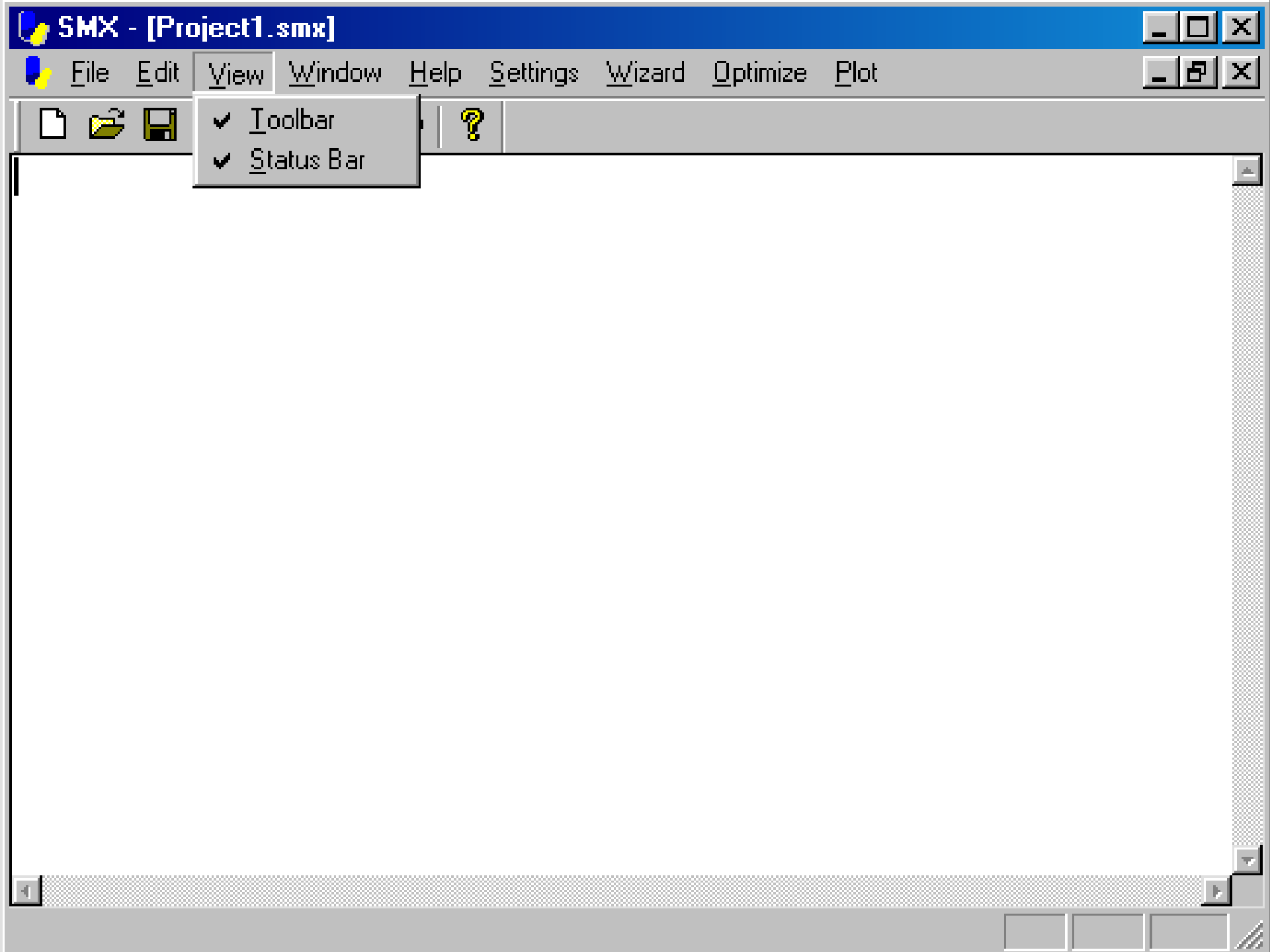


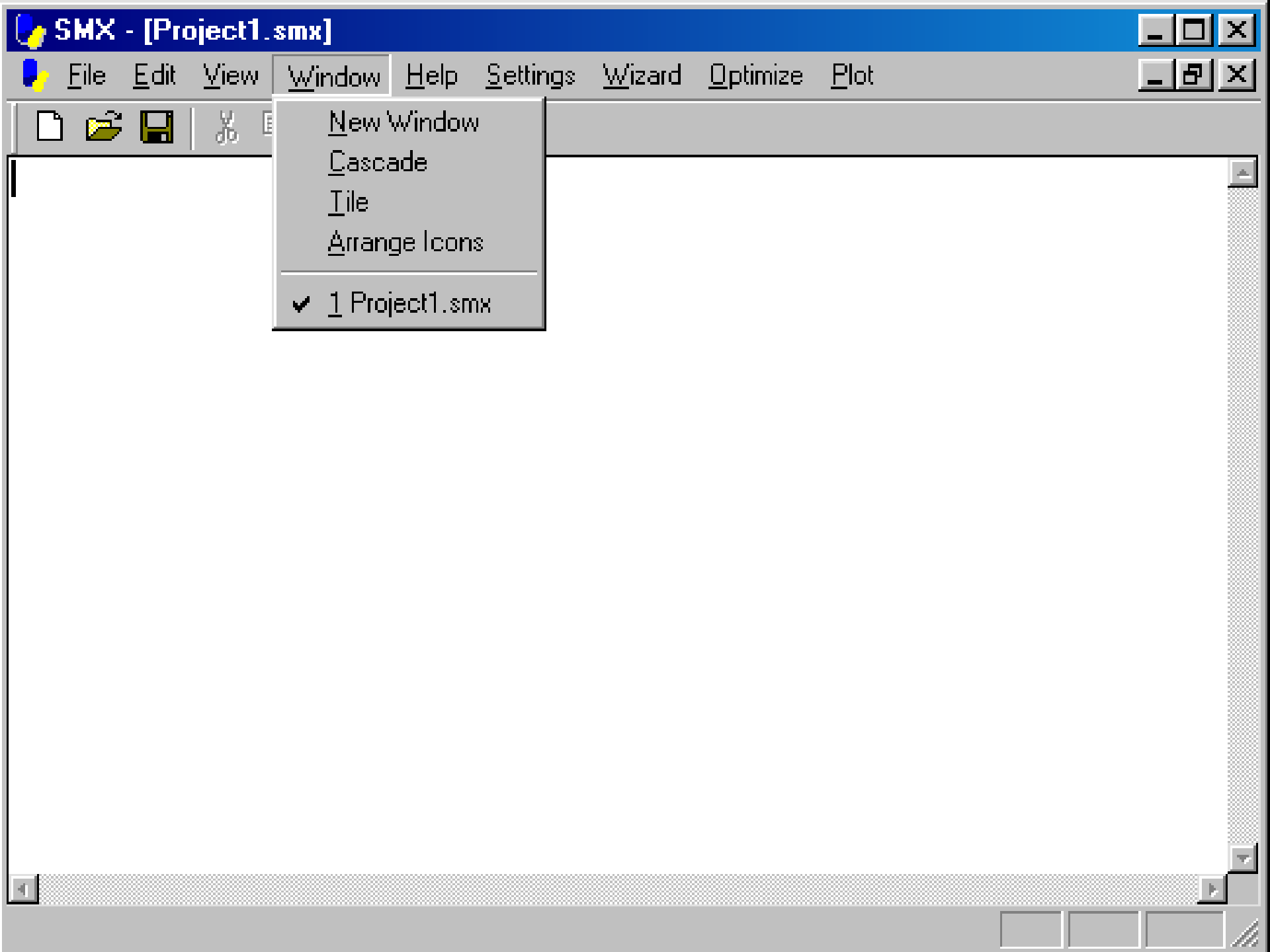
SMX - [Project1.smx]

File Edit View Window Help Settings Wizard Optimize Plot

- New Ctrl+N
- Open... Ctrl+O
- Close
- Save Ctrl+S
- Save As...
- Print... Ctrl+P
- Print Preview
- Print Setup...
- 1 Project1.smx
- Exit







SMX - [Project1.smx]

File Edit View Window Help Settings Wizard Optimize Plot



New Window

Cascade

Tile

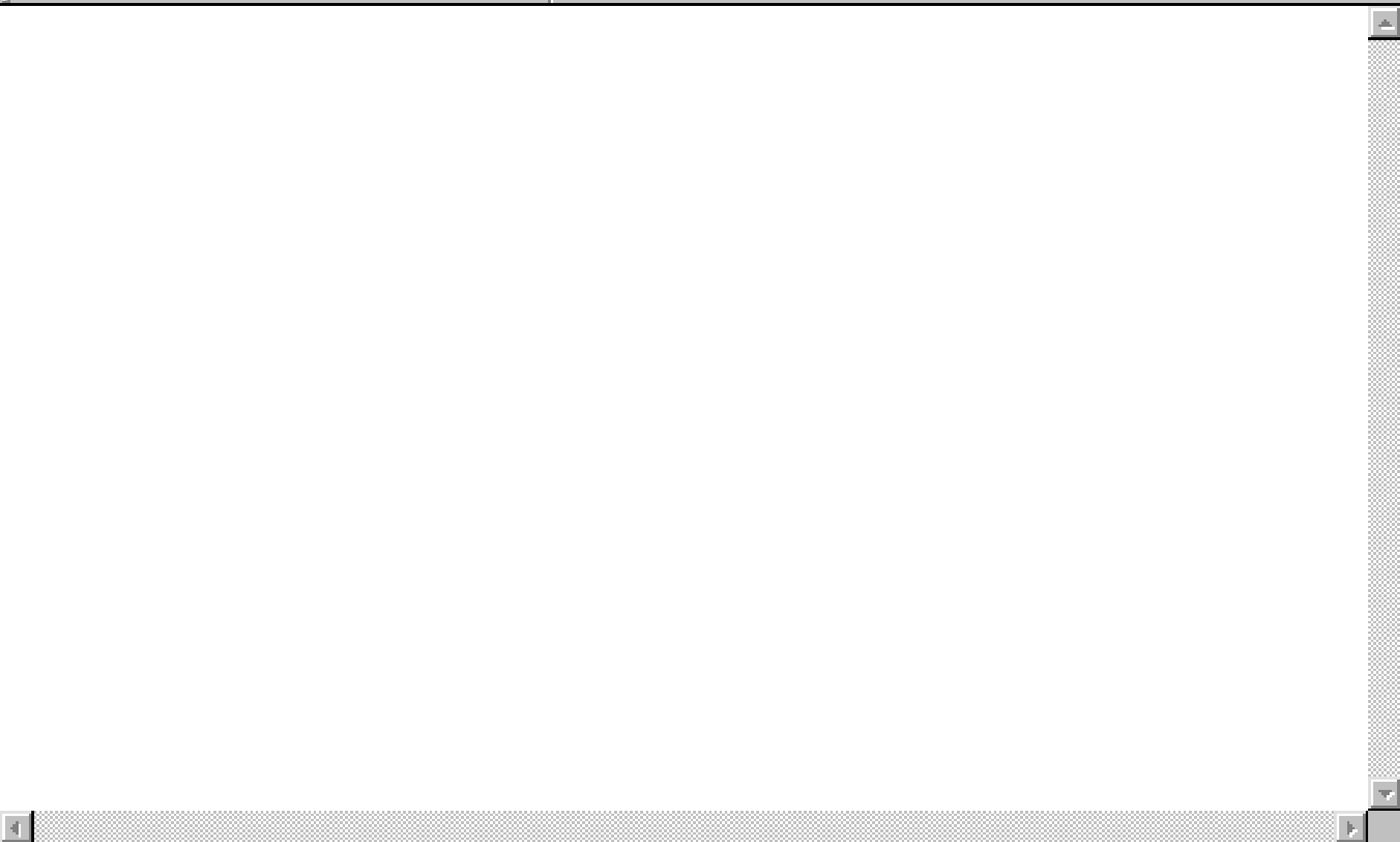
Arrange Icons

✓ 1 Project1.smx

SMX - [Project1.smx]



File Edit View Window Help Settings Wizard Optimize Plot




Ready



SMX Project Setup

Project Location

Project Name:

Location: 

Simulator

Model A:

Model B:

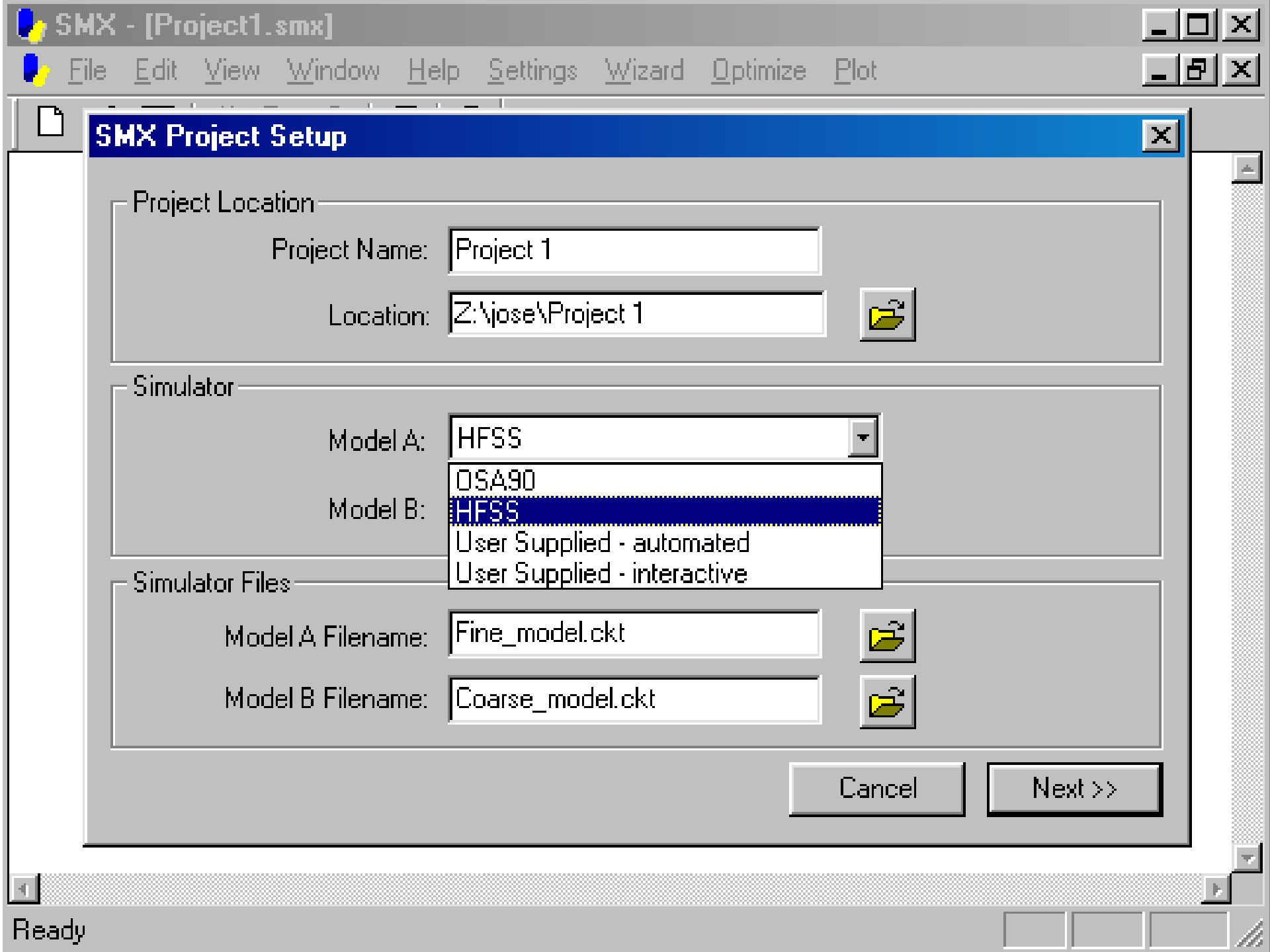
Simulator Files

Model A Filename: 

Model B Filename: 

Cancel

Next >>



SMX Project Setup

Project Location

Project Name:

Location: 

Simulator

Model A:

Model B:
OS490
HFSS
User Supplied - automated
User Supplied - interactive

Simulator Files

Model A Filename: 

Model B Filename: 

Cancel

Next >>

SMX Project Setup

Project Location

Project Name:

Location: 

Simulator

Model A:

Model B:

Simulator Files

Model A Filename: 

Model B Filename: 

Cancel

Next >>

SMX Responses & Specifications



Specification Setup

Start

0.5

Stop

1.5

Step

0.1

Response

ms11

<=

Value

0.5

Add

Specifications

Start	Stop	Step	Response	Constraint	Value
0.500000	1.500000	0.100000	ms11	<=	0.500000

Delete

Mapping Parameters

- Designable Parameters
- Space
- Space and Frequency (decoupled)
- Space and Frequency (coupled)

Simulation Setup

Number of Iterations: 5

Number of Ports: 1

Cancel

<< Back

Next >>

SMX Parameter Setup

Parameter Setup

Parameter Name: Enable Parameter for Optimization Enable Discrete Perturbation

Initial Value

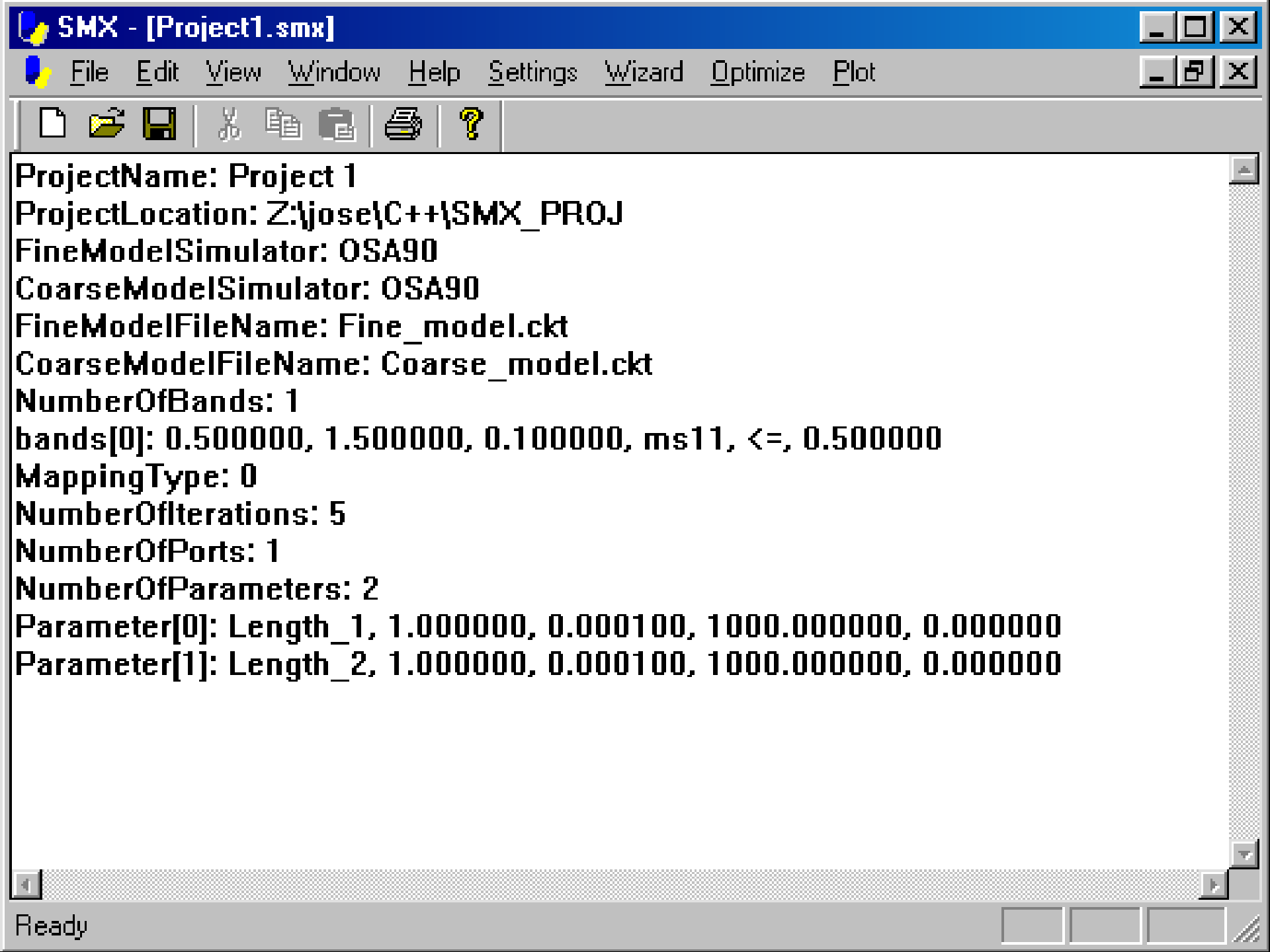
Minimum Value

Maximum Value

Step

Designable Parameters List

Parameter	Initial	Minimum	Maximum	Step	Enabled
Length_1	1.000000	0.000100	1000.000...	0.000010	Yes



SMX - [Project1.smx]

File Edit View Window Help Settings Wizard Optimize Plot



ProjectName: Project 1
ProjectLocation: Z:\jose\C++\SMX_PROJ
FineModelSimulator: OSA90
CoarseModelSimulator: OSA90
FineModelFileName: Fine_model.ckt
CoarseModelFileName: Coarse_model.ckt
NumberOfBands: 1
bands[0]: 0.500000, 1.500000, 0.100000, ms11, <=, 0.500000
MappingType: 0
NumberOfIterations: 5
NumberOfPorts: 1
NumberOfParameters: 2
Parameter[0]: Length_1, 1.000000, 0.000100, 1000.000000, 0.000000
Parameter[1]: Length_2, 1.000000, 0.000100, 1000.000000, 0.000000

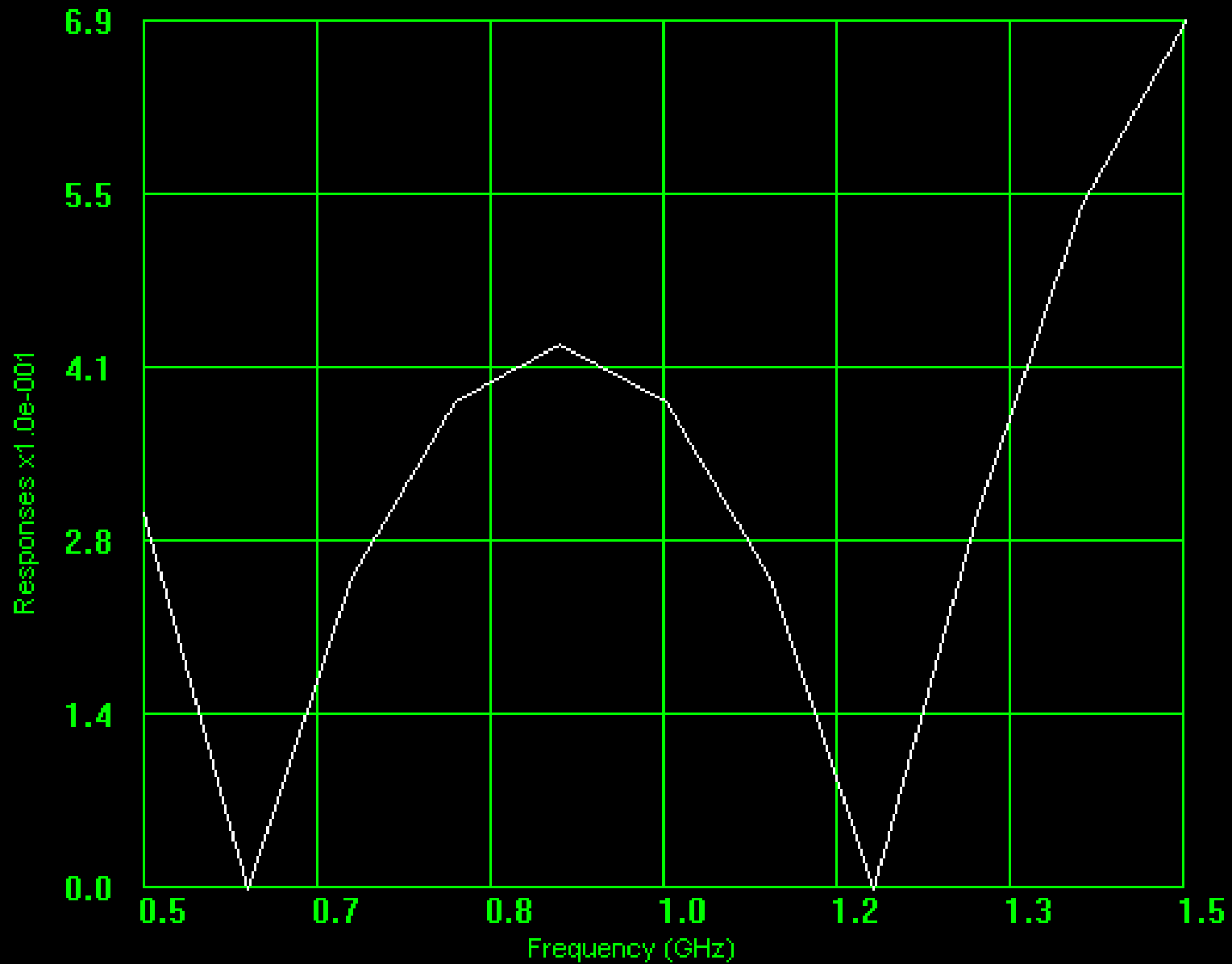
Ready



Plot

- Model B Response
- ✓ Model Objective
- Model A Response

ProjectName: Project 1
ProjectLocation: C:\Project 1
FineModelSimulator: OSA90
CoarseModelSimulator: OSA90
FineModelFileName: Fine_model.ckt
CoarseModelFileName: Coarse_model.ckt
NumberOfBands: 1
bands[0]: 0.500000, 1.500000, 0.100000, ms11, <=, 0.500000
MappingType: 0
NumberOfIterations: 5
NumberOfPorts: 1
NumberOfParameters: 2
Parameter[0]: Length_1, 1.000000, 0.000100, 1000.000000, 0.000000
Parameter[1]: Length_2, 1.000000, 0.000100, 1000.000000, 0.000000



OK

Cancel

Tick

Ticks

X-Tick

6

Y-Tick

5

Legend

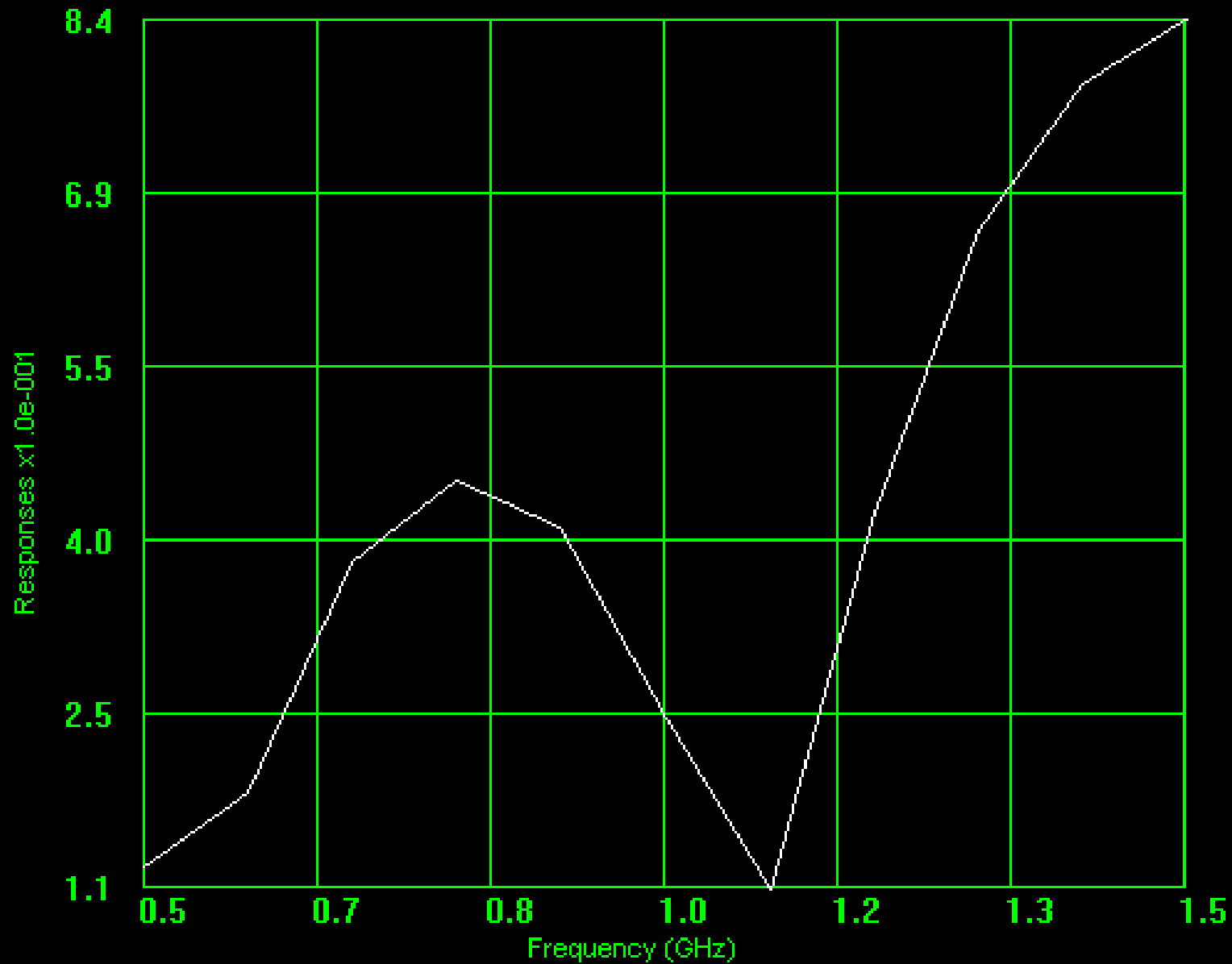
- ms11



Plot

- Model B Response
- ✓ Model Objective
- Model A Response

ProjectName: Project 1
ProjectLocation: C:\Project 1
FineModelSimulator: OSA90
CoarseModelSimulator: OSA90
FineModelFileName: Fine_model.ckt
CoarseModelFileName: Coarse_model.ckt
NumberOfBands: 1
bands[0]: 0.500000, 1.500000, 0.100000, ms11, <=, 0.500000
MappingType: 0
NumberOfIterations: 5
NumberOfPorts: 1
NumberOfParameters: 2
Parameter[0]: Length_1, 1.000000, 0.000100, 1000.000000, 0.000000
Parameter[1]: Length_2, 1.000000, 0.000100, 1000.000000, 0.000000



OK

Cancel

Tick

Ticks

X-Tick

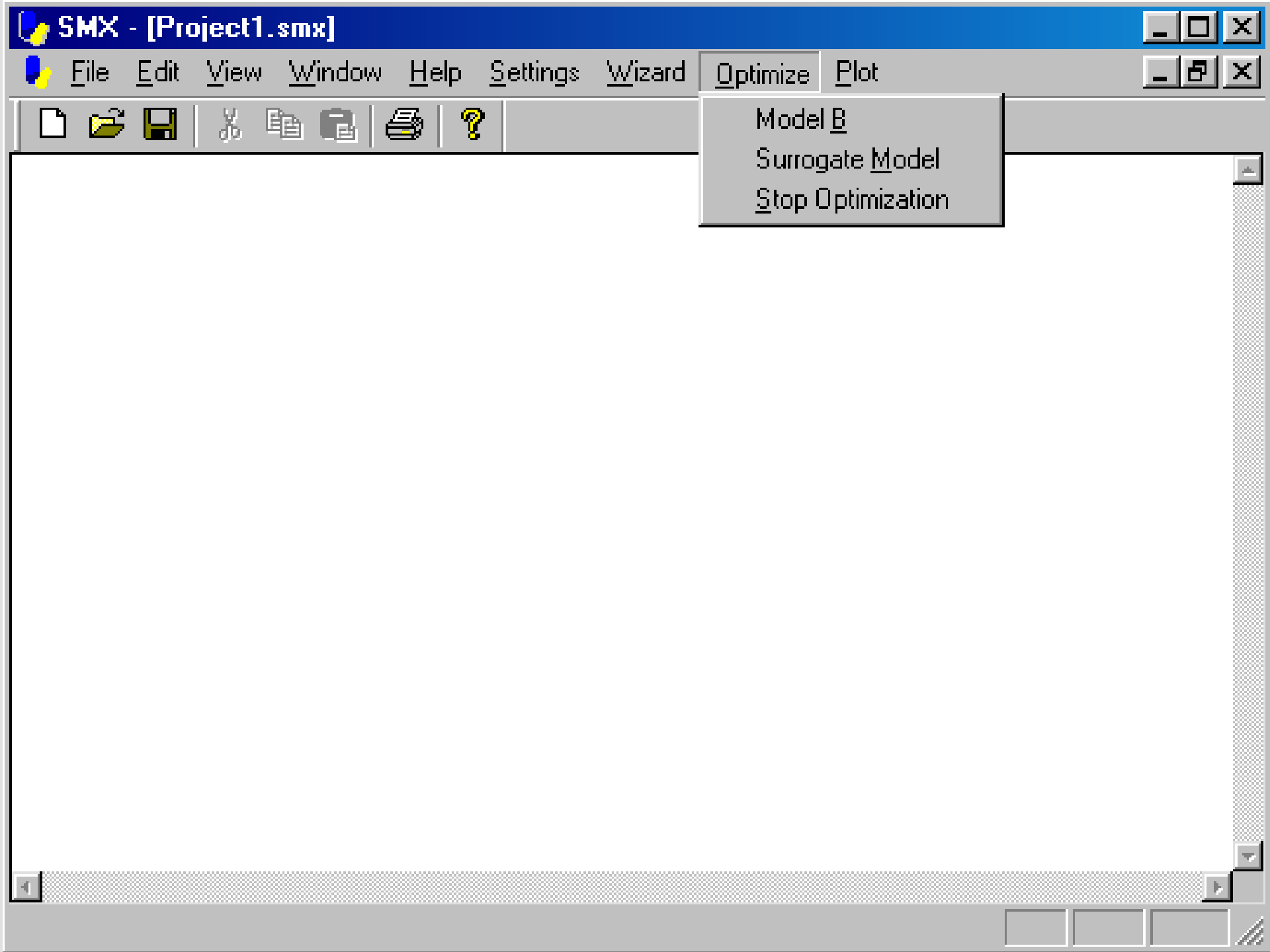
6

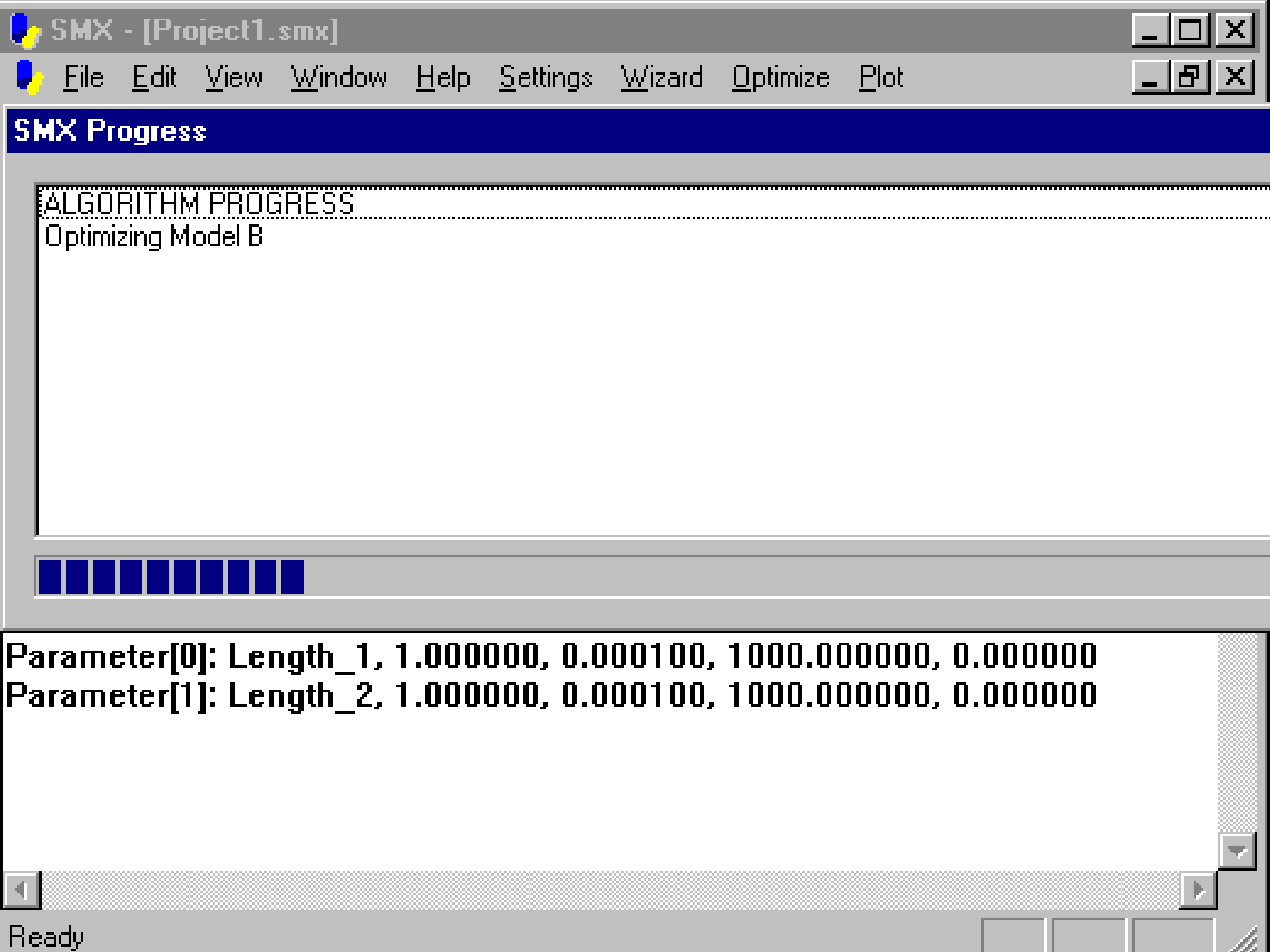
Y-Tick

5

Legend

- ms11





SMX - [Project1.smx]

File Edit View Window Help Settings Wizard Optimize Plot

SMX Progress

ALGORITHM PROGRESS

Optimizing Model B



Parameter[0]: Length_1, 1.000000, 0.000100, 1000.000000, 0.000000
Parameter[1]: Length_2, 1.000000, 0.000100, 1000.000000, 0.000000

Ready



SMX Progress

ALGORITHM PROGRESS

Optimizing Model B

Optimal Model B Design

Xos=[0.892725721

0.907274037]

Parameter[0]: Length_1, 1.000000, 0.000100, 1000.000000, 0.000000

Parameter[1]: Length_2, 1.000000, 0.000100, 1000.000000, 0.000000



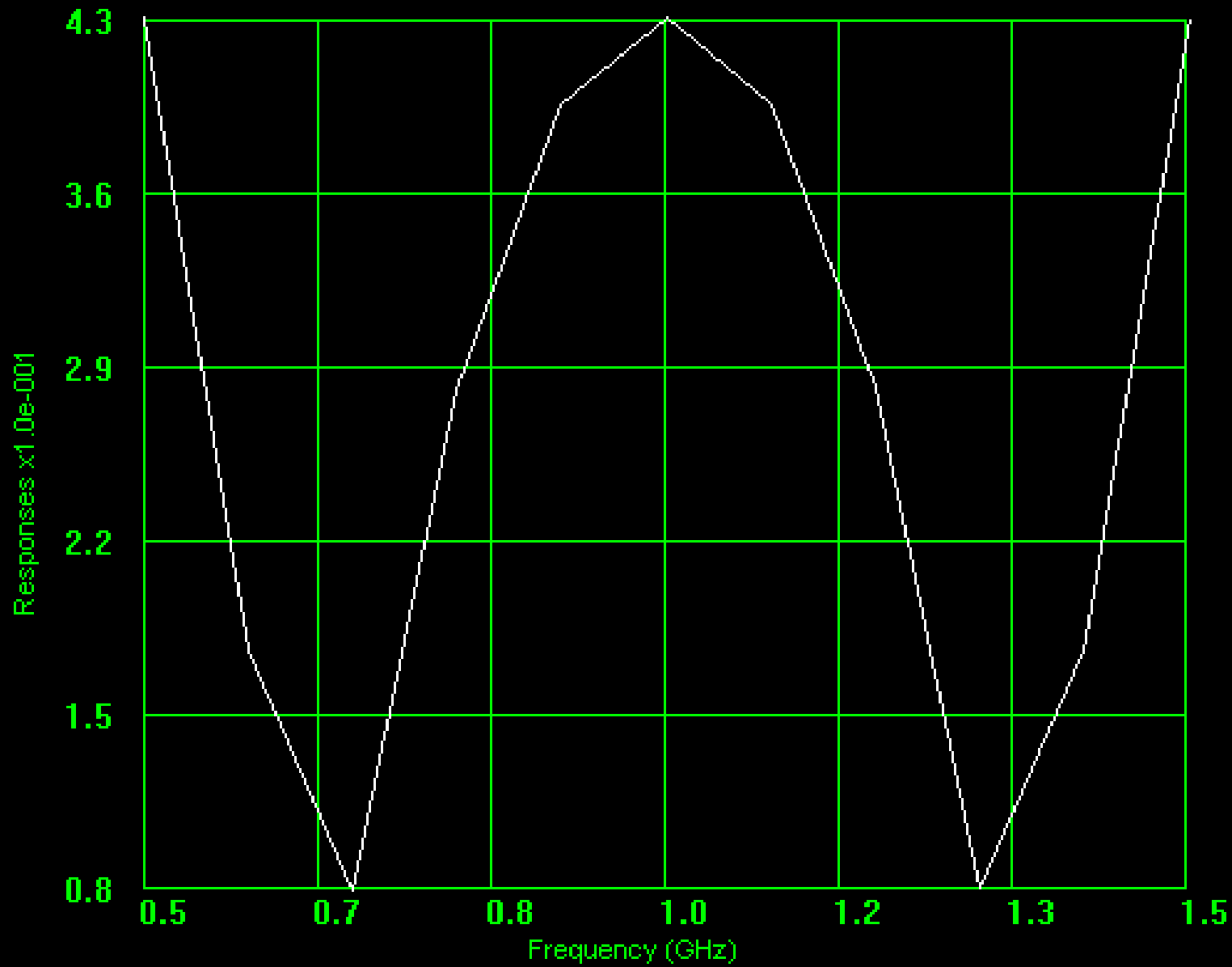


Plot

- Model B Response
- ✓ Model Objective
- Model A Response

ProjectName: Project 1
ProjectLocation: C:\Project 1
FineModelSimulator: OSA90
CoarseModelSimulator: OSA90
FineModelFileName: Fine_model.ckt
CoarseModelFileName: Coarse_model.ckt
NumberOfBands: 1
bands[0]: 0.500000, 1.500000, 0.100000, ms11, <=, 0.500000
MappingType: 0
NumberOfIterations: 5
NumberOfPorts: 1
NumberOfParameters: 2
Parameter[0]: Length_1, 1.000000, 0.000100, 1000.000000, 0.000000
Parameter[1]: Length_2, 1.000000, 0.000100, 1000.000000, 0.000000





OK

Cancel

 Tick

Ticks

X-Tick

6

Y-Tick

5

Legend

- ms11

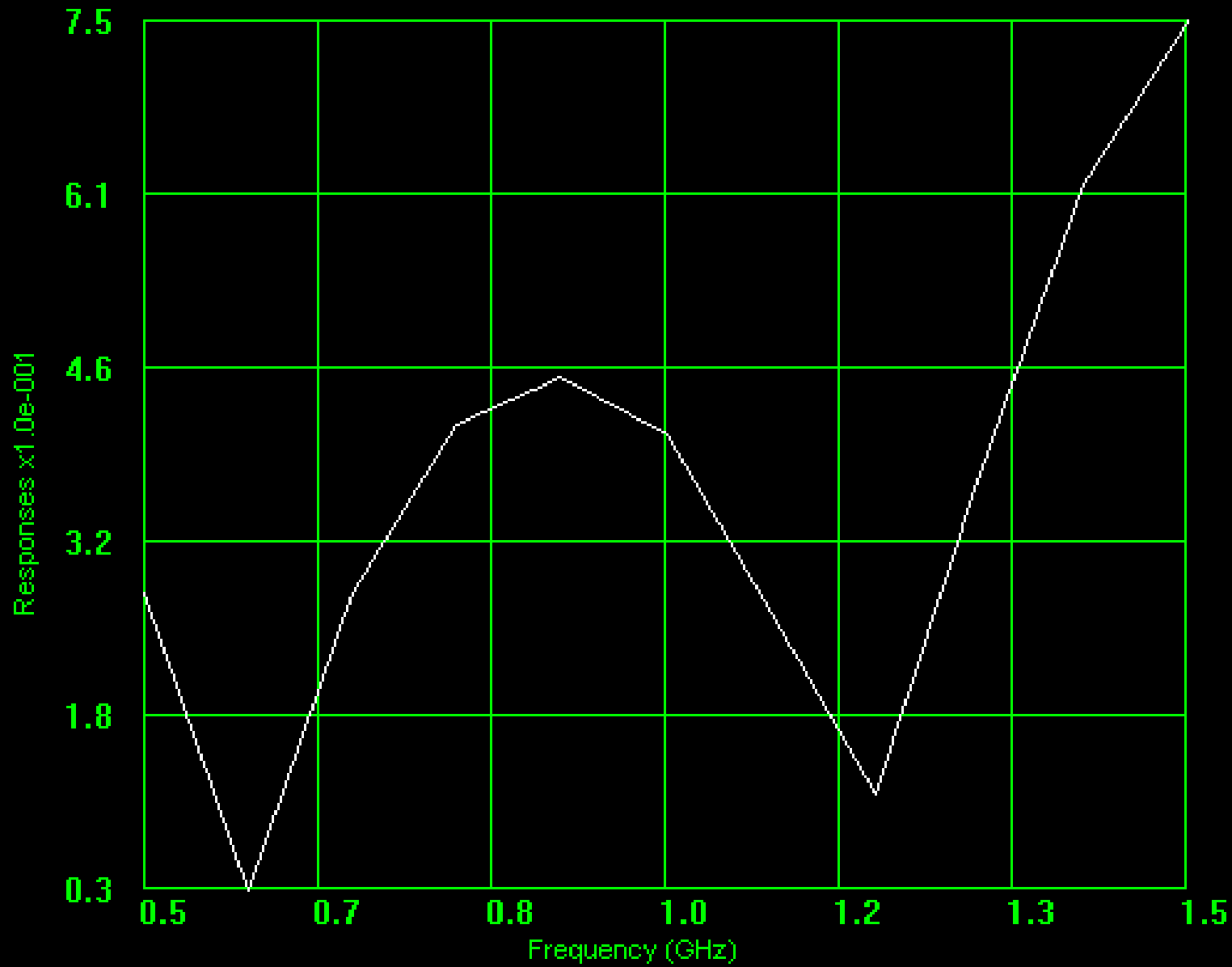


Plot

- Model B Response
- ✓ Model Objective
- Model A Response

ProjectName: Project 1
ProjectLocation: C:\Project 1
FineModelSimulator: OSA90
CoarseModelSimulator: OSA90
FineModelFileName: Fine_model.ckt
CoarseModelFileName: Coarse_model.ckt
NumberOfBands: 1
bands[0]: 0.500000, 1.500000, 0.100000, ms11, <=, 0.500000
MappingType: 0
NumberOfIterations: 5
NumberOfPorts: 1
NumberOfParameters: 2
Parameter[0]: Length_1, 1.000000, 0.000100, 1000.000000, 0.000000
Parameter[1]: Length_2, 1.000000, 0.000100, 1000.000000, 0.000000





OK

Cancel

 Tick

Ticks

X-Tick

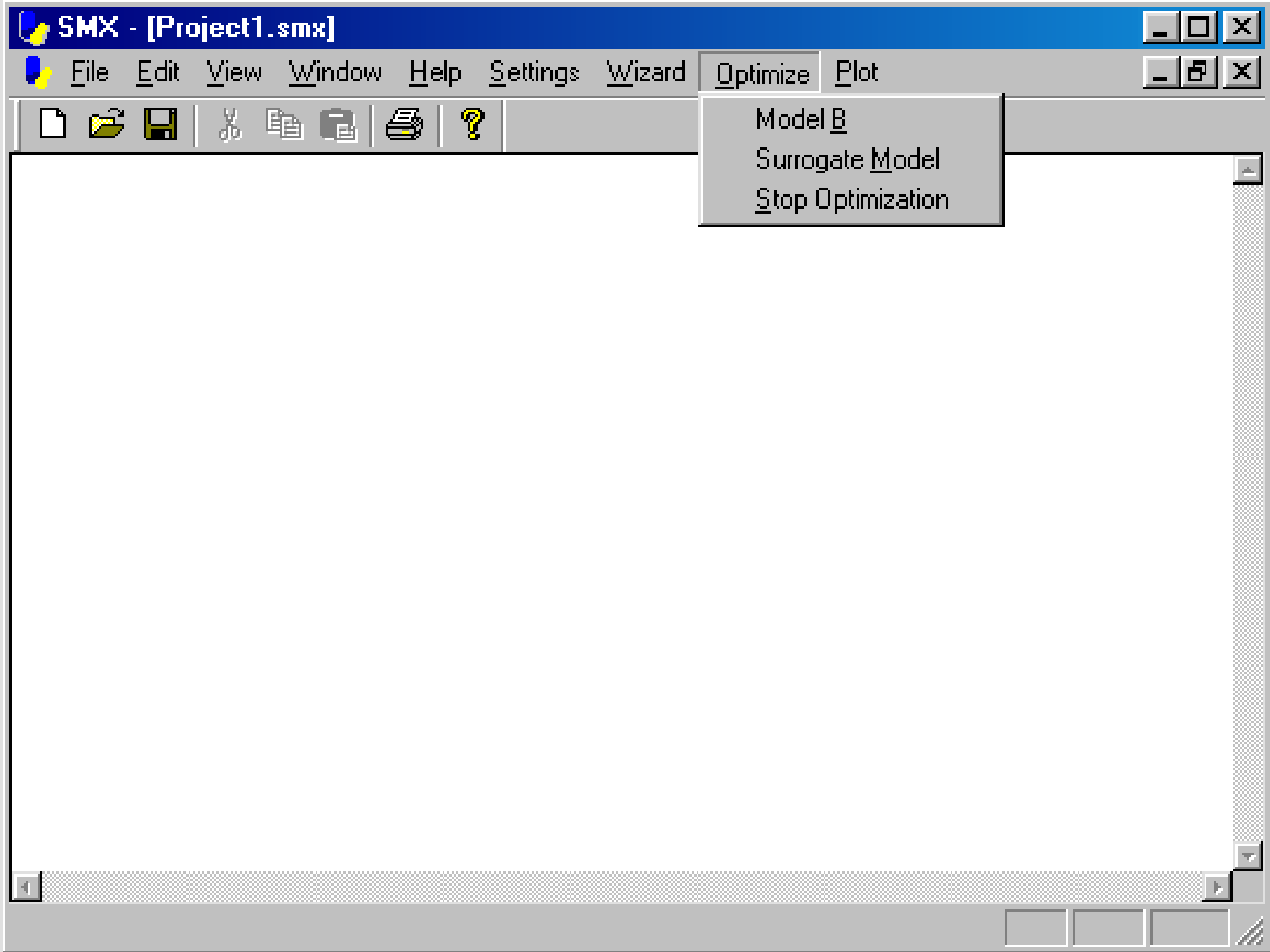
6

Y-Tick

5

Legend

— ms11

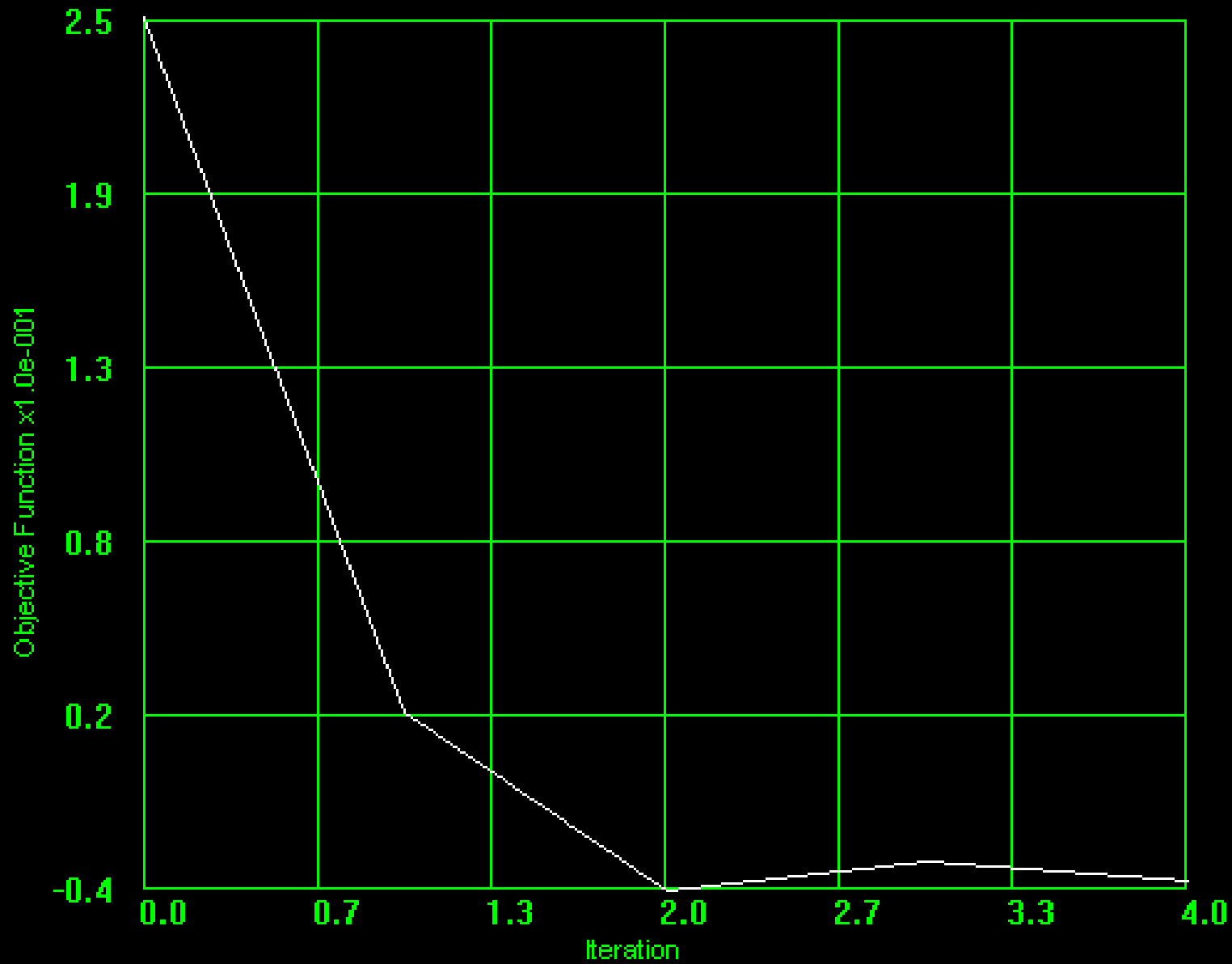


SMX - [Project1.smx]

File Edit View Window Help Settings Wizard Optimize Plot



- Model B
- Surrogate Model
- Stop Optimization



OK

Cancel

 Tick

Ticks

X-Tick

6

Y-Tick

5

Legend

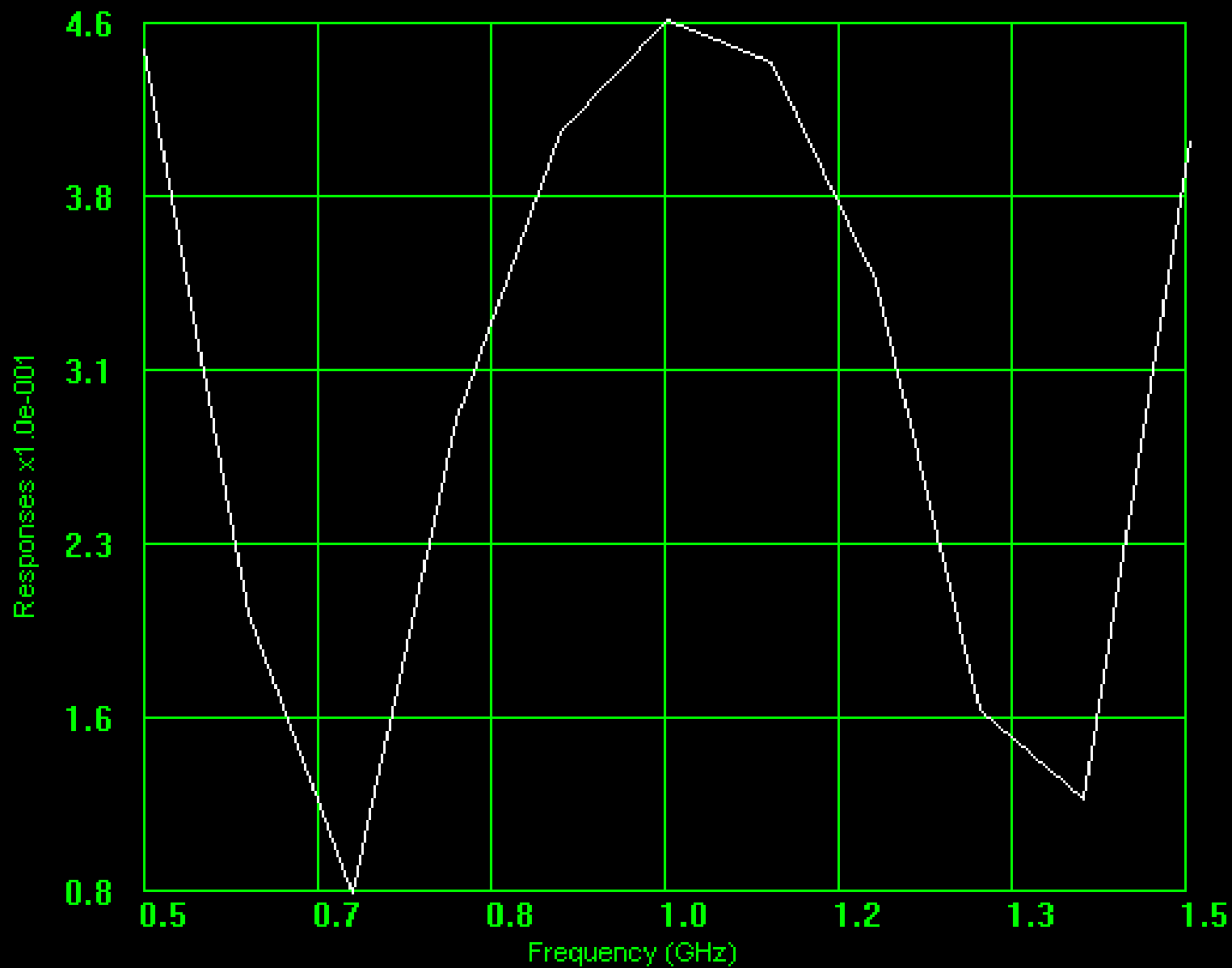


Plot

- Model B Response
- ✓ Model Objective
- Model A Response

ProjectName: Project 1
ProjectLocation: C:\Project 1
FineModelSimulator: OSA90
CoarseModelSimulator: OSA90
FineModelFileName: Fine_model.ckt
CoarseModelFileName: Coarse_model.ckt
NumberOfBands: 1
bands[0]: 0.500000, 1.500000, 0.100000, ms11, <=, 0.500000
MappingType: 0
NumberOfIterations: 5
NumberOfPorts: 1
NumberOfParameters: 2
Parameter[0]: Length_1, 1.000000, 0.000100, 1000.000000, 0.000000
Parameter[1]: Length_2, 1.000000, 0.000100, 1000.000000, 0.000000





OK

Cancel

 Tick

Ticks

X-Tick

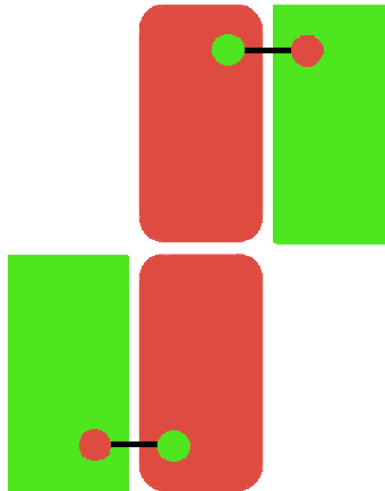
6

Y-Tick

5

Legend

— ms11



First International Workshop on
SURROGATE MODELLING AND SPACE MAPPING
FOR ENGINEERING OPTIMIZATION

Technical University of Denmark
Lyngby, Denmark
November 16-18, 2000