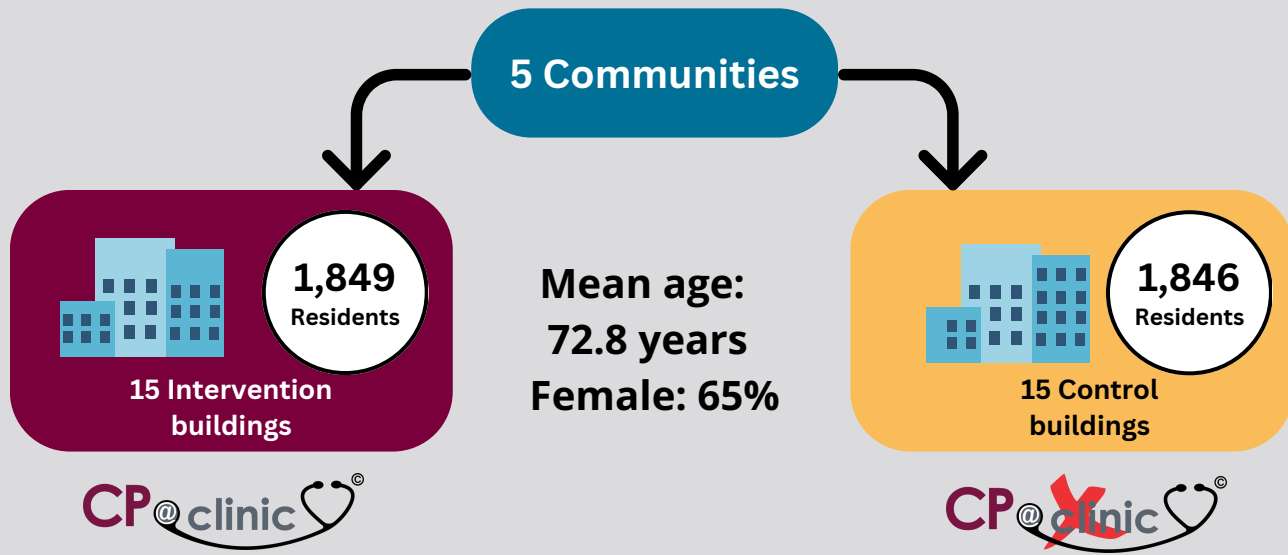


Community Paramedicine Program in Social Housing and Health Service Utilization: A Cluster-Randomized Clinical Trial



This study aimed to evaluate the effects of the CP@clinic program versus usual care on health service utilization outcomes

Pragmatic cluster-randomized controlled trial



Key Findings

Comparisons between CP@clinic attendees (intervention) vs control



Home care services*
35% vs 27%



Transfers to long-term care*
2% vs 5%

CP@clinic increased connections to home care services and reduced transfers to long-term care from social housing

*significant difference



Primary care visits*
7 visits vs 6 visits



Antihypertensive medication initiation*
24% vs 9%

CP@clinic increased primary care visits and increased antihypertensive medication initiation

*significant difference



vipresearchlab.ca



@VIPResearchLab



cpatclinic.ca



@CPatClinic