

WWIC?
linked library data
as a
customer service medium

@dchud - code4lib north - hamilton, on - 2011-05-06

Why Wasn't I Consulted?

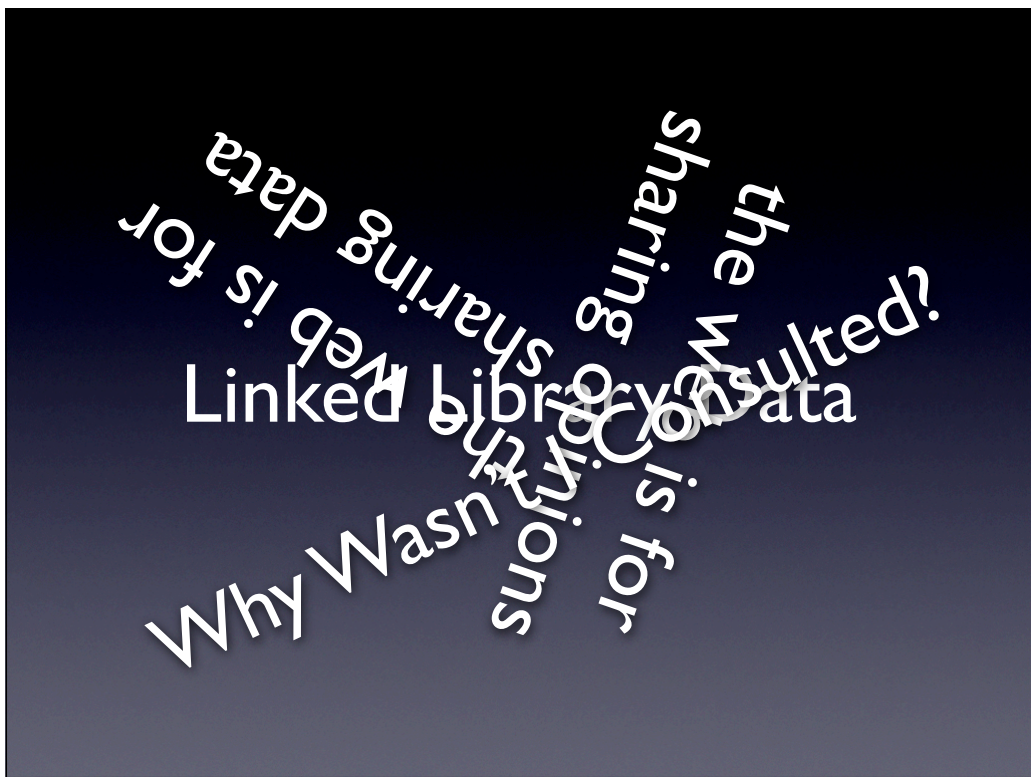
aka 'WWIC' - by Paul Ford

WWIC ==
the web is for
sharing opinions

Linked Library Data

aka 'LLD'

LLD ==
the web is for
sharing data



WWIC => the web *isn't*

- a radio
- a tv
- a newspaper
- an encyclopedia
- a librarian

WWIC => the web *is*

a way
to
share
opinions and expertise

github
SOCIAL CODING



stackoverflow

Quora

MetaFilter
community weblog

thoughtful platforms
for
opinions and expertise

if you're building
a website,
ask yourself

“How can people
use it
to share
their
opinions and expertise
about my stuff?”

WWIC

<http://www.ftrain.com/wwic.html>

LLD
linked library data

use URIs as names for things
use HTTP URIs
provide useful information
include links to other URIs


<http://www.w3.org/DesignIssues/LinkedData.html>

an example
of
what we used to build

[illegible]

an example
of
what we we build now

000 00000cz a220000n 45 0
001 oca00374139
005 20090729070338.0
008 800310n| acannaabn |b aaa
010 |an 79142935|zn 80090584
040 |aDL|C|beng|cDL|C|dDL|C|dMD|U|dDL|C-R|dOCoLC
100 0 |aRembrandt, Harmenszoon van Rijn,|d1606-1669
400 0 |aRāmbirānt,|d1606-1669
400 0 |aRembrandt, Garmens van Rein,|d1606-1669
400 0 |aRembrandt van Rein,|d1606-1669
400 0 |aLun-po-lang,|d1606-1669
400 0 |aRembrandt,|d1606-1669
400 1 |aVan Rijn, Rembrandt Harmenszoon,|d1606-1669
400 1 |aRijn, Rembrandt Harmenszoon van,|d1606-1669
400 0 |aRembrandt Harmensz van Rijn,|d1606-1669
400 0 |aReimbrandt,|d1606-1669
400 0 |aRembrandt van Rijn,|d1606-1669
400 0 |רמברנדט|
400 0 |רמברנדט הרמסזון וארײן|,|d16061669-
400 0 |رامبرانت|
667 |aMachine-derived non-Latin script reference project.
667 |aNon-Latin script references not evaluated.
670 |aRostworowski, M. Rembrandia przypowieść o miłośniernym Samarytaninie, 1980:|bt.p. (Rembrandt)|
670 |aP80-10269|b|Rembrandt Harmens van Rijn)
670 |aCaylus, A.C.P. comte de. Histoire de Joseph, 1757:|bt.p. (Reimbrandt)|
670 |aCepik, J. Samotny o zmierzchu, c1985:|bcover (Rembrandt van Rijn)
670 |aHoland shel Rembrandt, c1992.
999 |a9011324



Rembrandt Harmenszoon van Rijn
Dutch, 1606–1669

Old Man in a Gorget and Black Cap, c. 1631
Oil on panel
83.1 x 75.7 cm
Mr. and Mrs. W.W. Kimball Collection, 1922.4467

[View enlargement](#)

A man in military dress stares intently at the viewer in Rembrandt's *Old Man in a Gorget and Black Cap*. The unidentified model for the *portrait* was one of Rembrandt's favorite *sitters*, sometimes mistakenly identified as his father. Although Rembrandt often recruited this man to exact roles for biblical scenes, he is here the subject of an evocative *character study*. Rembrandt emphasized his stately appearance by highlighting his upright posture, earnest expression, and weathered countenance. The artist ennobled the old man further by portraying him in an outfit that includes a chain of office, a soldier's steel *gorget*, and a fancy plumed beret. This was not a standard military uniform but an assembly of costume pieces collected by the artist, who liked to scour flea markets for props that would make his sitters appear more interesting and colorful.


Rembrandt at
artic.edu

authority record at OCLC

Here is a sample of how different cultural heritage institutions represent the famous artist Rembrandt on the web. The museum's page at right shows an example item by the artist with some description. The authority record at left shows a lot of useful information including identifiers and name form variations. These pages do not link to each other. In this case, I did not find them using Google.



*linkypedia*_α

*linkypedia helps you **explore** how your web content is used on wikipedia, **extract** crowd-sourced information about your web resources, and **connect** with wikipedians who are using your stuff. More about the rationale for linkypedia can be found [here](#). *

recently found: [Stephen Glover \(composer\)](#) referencing [VIAF](#)



London Gazette (149,552)



bioguide.congress.gov (21,761)



WorldCat.org: The World's Largest Library Catalog (18,836)



OCLC Research Linked Authority File (2.0) (15,608)

American Memory from the Library of Congress (9,713)

Australia Trove (4,256)

who's linking
to my stuff
in wikipedia?



linkypedia

Rembrandt

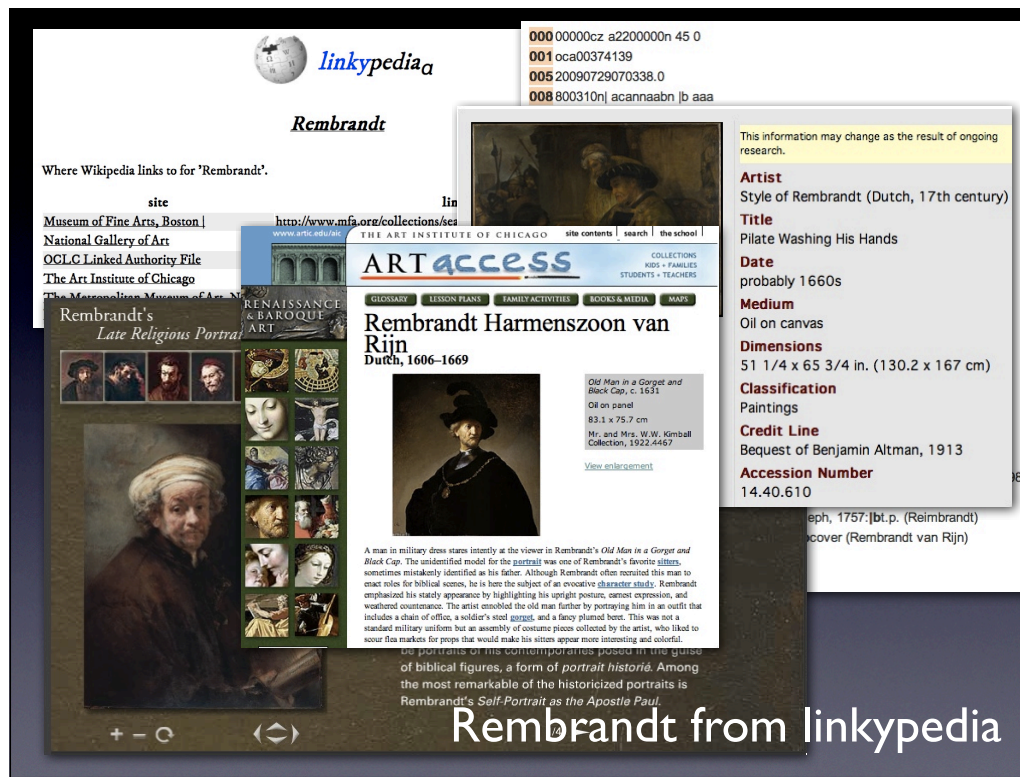
Where Wikipedia links to for 'Rembrandt'.

site	link
Museum of Fine Arts, Boston	http://www.mfa.org/collections/search_art.asp
National Gallery of Art	http://www.nga.gov/exhibitions/2005/rembrandt/flash/index.shtml
OCLC Linked Authority File	http://errol.oclc.org/laf/n79142935.html
The Art Institute of Chicago	http://www.artic.edu/artaccess/AA_RenBar/pages/REN_7_1g.shtml
The Metropolitan Museum of Art, New York: metmuseum.org	http://www.metmuseum.org/Works_Of_Art/viewOne.asp?dep=11&viewmode=1&item=1440.610

Rembrandt in linkypedia

In this case, I found these two pages using linkypedia (リンキピディア).

linkypedia is a software project started by Ed Summers. To use linkypedia, you give it a list of sites you care about, like you library's website or a museum website, and it crawls Wikipedia to find links from article pages to your sites. In this case I gave linkypedia a list of libraries and museums I have visited. It found several museum sites' pages linked to from the Wikipedia page for "Rembrandt". It also found a link to the name authority record for Rembrandt that is published by OCLC in its Linked Authority File online.



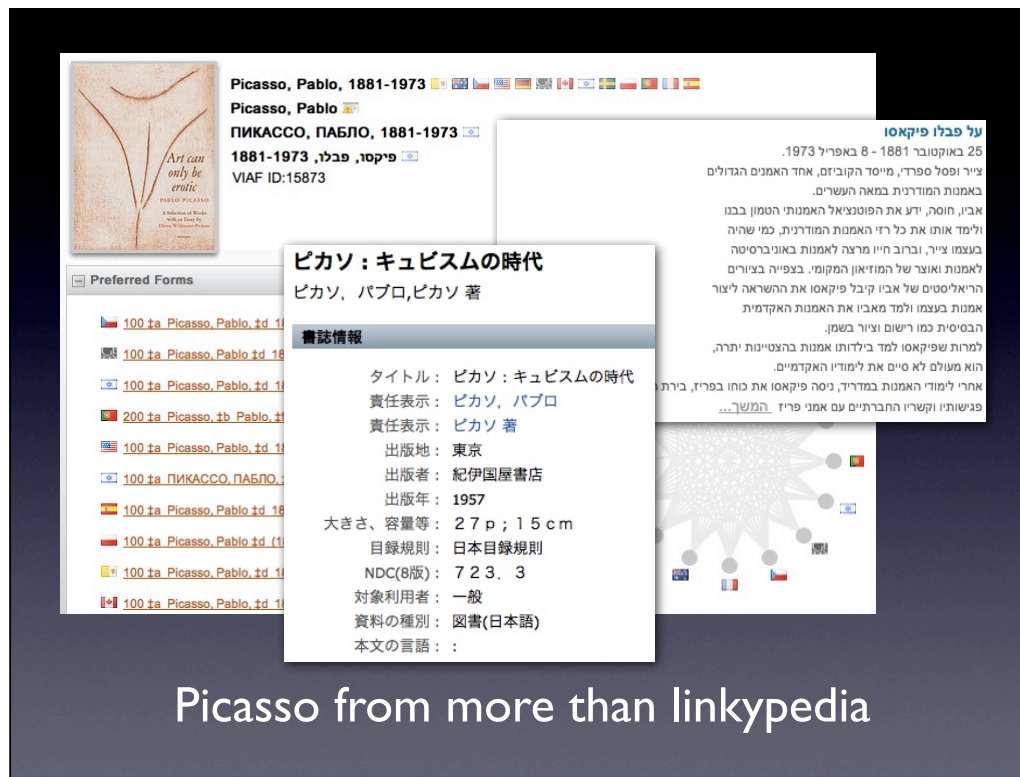
This image collage shows the different pages linked to from the linkypedia page. It starts with the linkypedia resource and the authority record from OCLC in the background, and has images from the New York Metropolitan Museum of Art, the Art Institute of Chicago, and the National Gallery of Art in Washington. It emphasizes how the links in linkypedia and wikipedia can bring together resources from disparate locations. But something's missing here. We can do more with our own library data.

Picasso, Pablo, 1881-1973 (n 78086005)

Picasso, Pablo, 1881-1973	BNF - British Library - Museum - 国立国会図書館 - LC - google - bing
Ruys, Pablo, 1881-1973	BNF - British Library - Museum - 国立国会図書館 - LC - google - bing
Ruiz, Pablo, 1881-1973	BNF - British Library - Museum - 国立国会図書館 - LC - google - bing
Ruiz y Picasso, Pablo, 1881-1973	BNF - British Library - Museum - 国立国会図書館 - LC - google - bing
Ruiz Picasso, Pablo, 1881-1973	BNF - British Library - Museum - 国立国会図書館 - LC - google - bing
Ruys Picasso, Pablo, 1881-1973	BNF - British Library - Museum - 国立国会図書館 - LC - google - bing
Bikāsū, Bāblū, 1881-1973	BNF - British Library - Museum - 国立国会図書館 - LC - google - bing
Pikasso, Pablo, 1881-1973	BNF - British Library - Museum - 国立国会図書館 - LC - google - bing
Pikaso, Paburo, 1881-1973	BNF - British Library - Museum - 国立国会図書館 - LC - google - bing
Pi-chia-so, 1881-1973	BNF - British Library - Museum - 国立国会図書館 - LC - google - bing
Pikaso, Pablo, 1881-1973	BNF - British Library - Museum - 国立国会図書館 - LC - google - bing
פיקאסו	BNF - British Library - Museum - 国立国会図書館 - LC - google - bing
פיקאסו, פאבלו, 1881-1973	BNF - British Library - Museum - 国立国会図書館 - LC - google - bing
פיקאסו, פבלו	BNF - British Library - Museum - 国立国会図書館 - LC - google - bing
ピカソパブロ, 1881-1973	BNF - British Library - Museum - 国立国会図書館 - LC - google - bing

Picasso: name variants, search links

I added this page to linkypedia to make more use of the name authority record. Here you see name variations from the authority record, a link to an LCCN search in Google, and links to search several famous cultural heritage institutions as well as general search engines.



Picasso from more than linkypedia

This image collage shows a sample of the broader results we can find when following these links from the name forms. It includes pages from the Virtual International Authority File (VIAF), an Israeli museum site, and the NDL. Actually, the page added to linkypedia with name forms is partly similar in function to the VIAF page.

platform for
following your nose
to cool stuff

lovely, but

WWIC?

if we stop here
we're missing something

how can people
use this
to share
opinion and expertise
?

LLD
needs
feedback mechanisms

comments?

voting?

q&a?

edits?

i tried
edits
using version control

w/MeSH

MeSH Heading	Calcimycin
Tree Number	D03.438.221.173
Scope Note	An ionophorous, polyether antibiotic from <i>Streptomyces chartreusensis</i> . It binds and transports cations across membranes and uncouples oxidative phosphorylation while inhibiting ATPase of rat liver mitochondria. The substance is used mostly as a biochemical tool to study the role of divalent cations in various biological systems.
Entry Term	A-23187
Entry Term	A23187
Entry Term	Antibiotic A23187
Allowable Qualifiers	AA AD AE AG AI AN BI BL CF CH CL CS CT DU EC HI IM IP ME PD PK PO RE SD ST TO TU UR
Pharm. Action	Anti-Bacterial Agents
Pharm. Action	Ionophores
CAS Type 1 Name	4-Benzoxazolecarboxylic acid, 5-(methylamino)-2-((3,9,11-trimethyl-8-(1-methyl-2-oxo-2-(1H-pyrrol-2-yl)ethyl)-1,7-dioxaspiro(5.5)undec-2-yl)methyl)-, (6S-(6alpha(2S*,3S*),8beta(R*),9beta,11alpha))-
Registry Number	52665-69-7
Previous Indexing	Antibiotics (1973-1974)
Previous Indexing	Carboxylic Acids (1973-1974)
Online Note	use CALCIMYCIN to search A 23187 1975-90
History Note	91(75); was A 23187 1975-90 (see under ANTIBIOTICS 1975-83)
Date of Entry	19741119
Unique ID	D000001

MeSH Browser

static
up-to-date
opaque URIs
read-only

3 years of MeSH history as version-control-backed LLD

meshed / summary

summaryshortlogchangeloggraphtagsfileschangeset

Mercurial Repository Overview

name

meshed

Search:

description

Dan Chudnov <dchud@umich.edu>

owner

Thu, 05 May 2011 20:30:33 +0000

last change

Changes

Age	Author	Message	
26 minutes ago	Dan Chudnov	Added tag marc11 for changeset 4d11c8deef97 default tip	changeset files
30 minutes ago	Dan Chudnov	marc11 load marc11	changeset files
34 minutes ago	Dan Chudnov	Added tag marc10 for changeset b0a17841f575	changeset files
35 minutes ago	Dan Chudnov	marc10 load marc10	changeset files
37 minutes ago	Dan Chudnov	Added tag marc09 for changeset 11d36344d722	changeset files
37 minutes ago	Dan Chudnov	marc09 load marc09	changeset files
...			

Tags

Age	Name	
30 minutes ago	marc11	changeset changelog files
35 minutes ago	marc10	changeset changelog files
37 minutes ago	marc09	changeset changelog files
...		

Branches

Age	Rev	Name	
26 minutes ago	6d38b05bd7f6	default	changeset changelog files

meshed / changelog

changelog

Added tag marc11 for changeset 4d11c8deef97

30 minutes ago, by Dan Chudnov <dchud@umich.edu>

Added tag marc11 for changeset 4d11c8deef97

marc11 load marc11

34 minutes ago, by Dan Chudnov <dchud@umich.edu> [Thu, 05 May 2011 20:22:24 +0000] rev 4

marc11 load

Added tag marc10 for changeset b0a17841f575

38 minutes ago, by Dan Chudnov <dchud@umich.edu> [Thu, 05 May 2011 20:22:24 +0000] rev 3

Added tag marc10 for changeset b0a17841f575

marc10 load marc10

38 minutes ago, by Dan Chudnov <dchud@umich.edu> [Thu, 05 May 2011 20:22:06 +0000] rev 2

marc10 load

meshed / file diff

diff: D000001

D000001

changeset 4 4d11c8deef97

parent 2 b0a17841f575

```
1.1 --- a/D000001 Thu May 05 20:22:06 2011 +0000
1.2 +++ b/D000001 Thu May 05 20:26:25 2011 +0000
1.3 @@ -4,7 +4,7 @@
1.4     "LDR": "00829nz 2200193n 4500",
1.5     "001": "D000001",
1.6     "008": "741119 n ancnnbabn || ana ",
1.7 -    "005": "Z0090831000000.0"
1.8 +    "005": "Z0100901000000.0"
1.9 },
1.10 "data": {
1.11     "150": [
```

Mercurial Repository: meshed

dynamic
up-to-date, plus history
(mappably) cool URIs
read/write

cloneable
forkable
editable locally
pushable
mergable
etc.able

not all roses

uninteresting diffs
awkward file names
lots of files per dir
serialization issues

but lots of possibilities

anybody could
add
comments

anybody could
clone for
local use

anybody could
fork
and submit patches

but

who would
share
opinions and expertise?



who would
share
opinions and expertise?

same people as do now

Vegans!

well,
Vegans and catalogers.

we do this work now in
private,
proprietary
systems

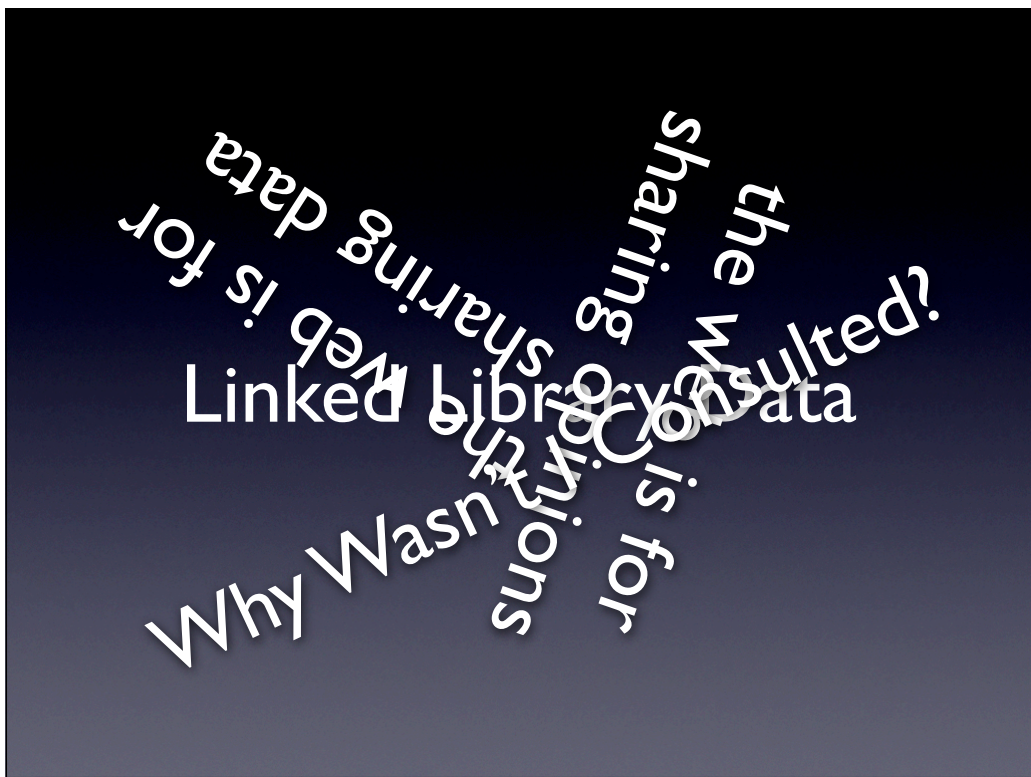
take
back-room systems
and
put them on the web

or, at least, output from them

use URIs as names for things
use HTTP URIs
provide useful information
include links to other URIs

<http://www.w3.org/DesignIssues/LinkedData.html>

mix in
versioning,
commenting



the web is for
sharing data

the web is for
sharing opinions

Linked Library Data

Why Wasn't I Consulted?

thanks!

@dchud